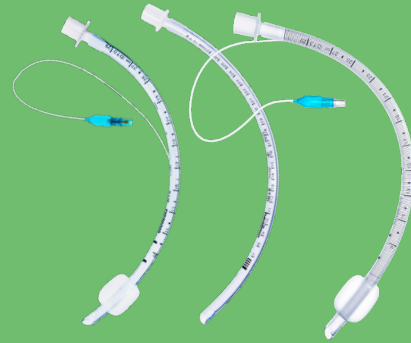
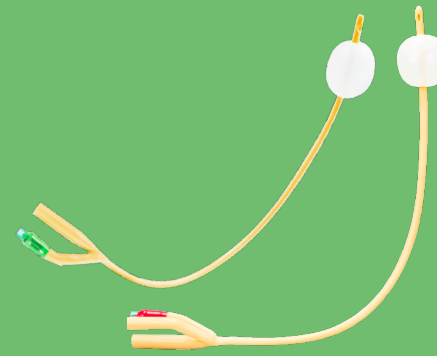


Suction Catheter



Endotracheal Tube (Cuffed & Uncuffed)
Reinforced Endotracheal Tube (Cuffed)
Non-Kinking



Foley Catheter
Latex & Silicone (2-way & 3-way)



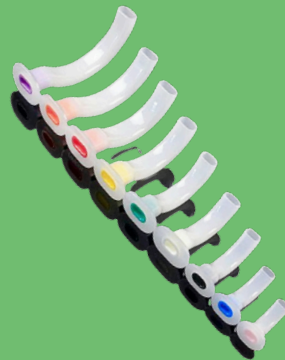
Stomach Tube (NGT)
PVC & Silicone



Laryngeal Mask Device
(Silicone)



Tracheostomy Tube



Guedel



Oxygen Mask



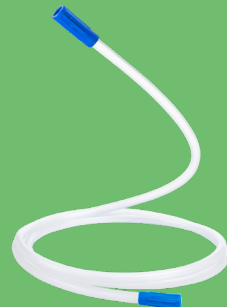
Non-Rebreathing Mask



Nebulizer Mask Kit



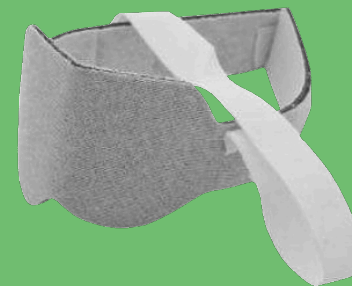
Nasal Cannula



Suction Connecting Tube
(w/ Yankeur)



Feeding Tube (PVC)



Phototherapy Eye Band
Dilex